



Solid Pattern Collar Banquet Long Evening Dress Sexy Temperament Slim Dress Woman

Our Product Introduction

for more products please visit us on stylishladydress.com

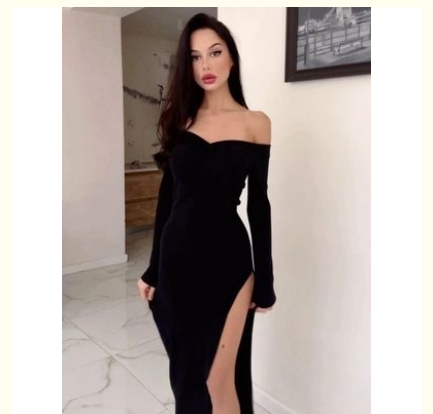
Basic Information

- Place of Origin: china
- Model Number: w601
- Minimum Order Quantity: expand on
- Price: expand on

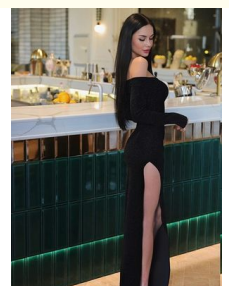


Product Specification

- Pattern Type: Solid
- Embellishment: Embroidery
- Length: Knee-length
- Fashion Element: Falbala, sloping Shoulder, slit
- Season: Autumn/Winter
- Name: Slim Evening Dress
- Sleeve Length: Long Sleeve, sleeveless
- Size: S, M, L
- Highlight: Collar Banquet Long Evening Dress, Solid Pattern Long Evening Dress



More Images



Product Description

Custom fashion new line collar banquet long evening dress sexy temperament slim dress woman

Technical Parameters:

Product Name	Slim Evening Dress
Style	Slim
Closure Type	Pullover
Size	S, M, L
Neckline	V-neck
Embellishment	Embroidery
Sleeve Length	Long Sleeve, Sleeveless
Pattern Type	Solid
Waistline	High Waist
Fashion Element	Falbala, Sloping Shoulder, Slit
Key Features	Latest trends in fashion for ladies, new fashion dress for women, shirt dress styles for ladies

Product Description:

Slim Evening Dress

Classy Dresses for Women

Looking for a versatile and elegant evening gown? The Slim Evening Dress is the perfect choice for you! With its slim silhouette and high waistline, it flatters your figure and makes you feel confident and beautiful.

Designed with luxurious embroidery, this dress exudes sophistication and adds a touch of glamour to your outfit. The intricate details on the fabric make it stand out from other fashion clothes for women.



Flattering Fit

Available in both long sleeve and sleeveless styles, this dress is suitable for any season or occasion. The pullover closure type makes it easy to put on and take off, while the high waistline accentuates your curves and gives you a flattering fit. Whether you're attending a formal event or a casual dinner, the Slim Evening Dress is a versatile design that can be dressed up or down to suit any occasion.

Elegant evening gowns

Slim silhouette

Luxurious embroidery

Versatile design

High waistline

[Shop Now](#)

Made with ♥ by Elegant Clothing Co.

Features:

Product Name: Slim Evening Dress

Neckline: V-neck

Gender: Female

Sleeve Length: Long Sleeve, Sleeveless

Closure Type: Pullover

Length: Knee-length

Shirt Dress Styles for Ladies

Womens Stylish Dresses

Elegant and Slimming

Applications:

Slim Evening Dress

Perfect Choice for Any Special Occasion

Slim Evening Dress is the trending fashion for ladies who want to stay classy and stylish. Made in China, this dress is designed to make you stand out from the crowd.

Product Attributes:

Fashion Element: Falbala, Sloping Shoulder, Slit

Pattern Type: Solid

Style: Slim

Size: S, M, L

Neckline: V-neck

Place of Origin: China

[Shop Now](#)

Latest Trends in Fashion for Ladies

If you want to keep up with the latest trends in fashion for ladies, then Slim Evening Dress is a must-have in your wardrobe. The combination of falbala, sloping shoulder, and a slit make this dress a unique and chic choice for any special occasion.

Classy Dresses for Women

Looking for a classy dress that will make you feel confident and beautiful? Look no further, Slim Evening Dress is the perfect choice for you. With its slim fit and stylish design, this dress will make you the center of attention at any event.

Customization:

Customized Service for Slim Evening Dress

At our company, we are proud to offer our customers a personalized and customized service for our trendy women's clothing, the Slim Evening Dress. Made with high-quality materials, this dress is perfect for any special occasion.

Place of Origin: China

Length: Knee-length

Season: Autumn/Winter

Gender: Female

Customized Service: Our team understands that every woman has a unique body shape and size. That's why we offer a customized service for our Slim Evening Dress to ensure a perfect fit for every customer. Our goal is to make you feel confident and beautiful in your dress.

Name: Slim Evening Dress

With our customized service, you can choose from a variety of options to personalize your dress. From fabric and color to neckline and sleeve length, we will work with you to create a dress that fits your personal style and preferences.

Don't settle for generic dress sizes, stand out in our personalized and trendy ladies' evening dress. Whether you're attending a formal event or a night out with friends, our Slim Evening Dress will make you feel elegant and fashionable.

Experience the best of personalized fit and style with our Slim Evening Dress. Contact us now to start creating your perfect dress!

FAQ:

.

VINAS DRESS Guangzhou Vinas clothing technology Co., LTD



15827133024



leopeng15827133024@gmail.com



stylishladydress.com

Building F, No. 3 Nanpu Nangui Road, Luopu Street, Panyu District, Guangzhou City