



## Satin Gradient Slip Dress Evening Dress Charming Slimming Formal Dresses

Our Product Introduction

for more products please visit us on [stylishladydress.com](http://stylishladydress.com)

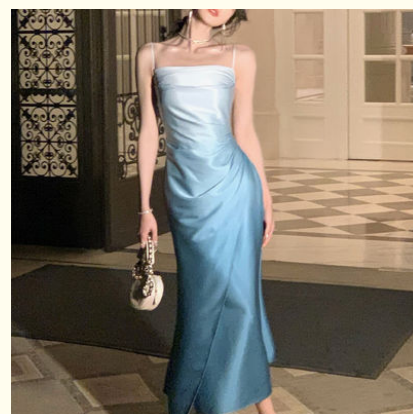
### Basic Information

- Place of Origin: china
- Model Number: 9638
- Minimum Order Quantity: expand on
- Price: expand on



### Product Specification

- Length: Maxi Dress
- Waistline: High Waist
- Closure Type: Pullover
- Gender: Female
- Color: Customizable
- Sleeve Length: Long Sleeve, sleeveless
- Pattern Type: Printing
- Name: Slim Evening Dress
- Fashionable Element: Sexy
- Style: Retro
- Highlight: **Satin Gradient Slip Dress ,  
Gradient Slip Dress Evening Dress ,  
Charming Slimming Formal Dresses**



### More Images



## Product Description

Satin gradient slip dress Evening dress - charming style

### Technical Parameters:

Name	Slim Evening Dress
Sleeve Length	sleeveless
Waistline	High Waist
Neckline	boat neck
Closure Type	Pullover
Length	Knee-length
Pattern Type	Solid
Fashion Element	Falbala,sloping Shoulder,slit
Embellishment	printing
Color	Customizable

### Product Description:

Make an impression in our latest slim-fit evening gowns! Made from high-quality cotton and polyester fibers, these stylish and comfortable pieces feature classic halter designs, retro styles, and sexy backless details. With a high waist line, this collection is perfect for any formal occasion. Feel like royalty in these amazing fashion dresses. Make a statement with our selection of slim-fit evening gowns - perfect for any special event or ladies' party!



### Features:

**Product Name:** Slim Evening Dress

**Color:** Customizable

**Season:** Autumn/Winter

**Fashion Element:** Falbala

**Name:** Slim Evening Dress  
**Embellishment:** printing  
**Highlight:** Trendy Women's Clothing, Fashion Dress

## Applications:

For those looking to make a lasting impression, the Slim Evening Dress is the perfect choice. Combining the latest trends in female fashion styles with the classic elegance of the long sleeve and V-neck combination, this dress is sure to turn heads. Made from the highest quality materials in China, the dress features a high waistline and solid pattern that is customizable in color. Whether attending a special event or simply going out for the night, the Slim Evening Dress is perfect for any occasion. Show off your unique style with this women's trending dress and be sure to impress. Look your best and be the center of attention at any event with the latest dresses for ladies party wear.

## Customization:

Custom Slim Evening Dress

Our custom slim evening dress is the perfect choice for women looking to make a statement with the latest trends in fashion. This stylish dress is made from the highest quality materials and is customizable in size, color, and style.

This slim evening dress features a knee-length design with a high waistline, making it ideal for any special occasion. It is made in China with excellent craftsmanship and attention to detail.

Choose from sizes S, M, or L and customize your dress with your favorite color to make it stand out. Make a statement with our new fashion dress for women and look stylish and fashionable in any event.

## FAQ:

Q1: What is the Place of Origin of this Slim Evening Dress?

A1: This Slim Evening Dress is from China.

Q2: What kind of material is this Slim Evening Dress made of?

A2: This Slim Evening Dress is made of polyester.

Q3: How many sizes of this Slim Evening Dress are available?

A3: This Slim Evening Dress is available in sizes S, M, L, XL, and XXL.

Q4: Is this Slim Evening Dress machine washable?

A4: Yes, this Slim Evening Dress is machine washable.

Q5: Does this Slim Evening Dress come with a belt?

A5: Yes, this Slim Evening Dress comes with a belt.

**VINAS DRESS** Guangzhou Vinas clothing technology Co., LTD



15827133024



leopeng15827133024@gmail.com



stylishladydress.com

Building F, No. 3 Nanpu Nangui Road, Luopu Street, Panyu District, Guangzhou City